

MAX OPTIMUS

Great heating power high class technology

31 kW ✓

Gas and
electricity
savings ✓

30 plates
secondary
heat
exchanger ✓

COMFORT
function ✓

Digital
display ✓

Brass
hydroblock
and stainless
steel pipes ✓

DHW
COMFORT
function ✓



CE 1798

PG TF 02



UA.TR.012-11

made by

KÖBER



MOTAN
WALL HUNG GAS BOILERS

www.motan.ro

MAX OPTIMUS

Tehnologie de înaltă clasă cu putere mare de încălzire!

Characteristics:

- Raised constant efficiency
- "Comfort DHW" function assures a high comfort by quickly responding to the domestic hot water consumer's request
- "Optimus system" permits, through a rigorous combustion control, an annual money saving of 5% in comparison with the traditional boilers.
- Reduced expenditure of electrical power
- Wall hung gas boiler easy to install due to its reduced size
- Flame electronic ignition and modulation
- Primary heat exchanger and secondary heat exchanger with 30 plates
- Continuous modulation gas valve
- Flowmeter to detect the domestic hot water debit
- NTC temperature sensors with ultra-fast respond on the heating and domestic hot water circuits
- 3-way gas valve
- LCD display control panel assures a highly efficient graphic interface and switch pads.
- Different work modalities for customers and plumbers as well
- Crono-thermostat and temperature external device connection option
- Gas boiler discharge valve
- « Comfort function » permits the customer not to mix hot water with cold water, but only to open the hot water tap
- Noxe low emission: NoX 4 on natural gas type and 4 on GPL type, category: II2H3B/P.

Type

Draft	Forced
Combustion chamber	Sealed
Efficiency at maximum load	93%
Efficiency at minimum load	92%
Useful power (min/ max)	13-31kW
Burner nominal load (min/ max)	14,8-33,17kW
Gas pressure	
NG on coupling (behind the reducer)	20 mbar
NG on maximum admitted	35 mbar
LPG	30 - 37 mbar
Power-supply	230 VAC, 50 Hz
Power consumption	160 W
Weight	45 Kg
Capacity of the heat exchanger	1,8 L
NG consumption (8500 kcal/ Nm3) at useful power (max/ min)	1,4 3,34 Nm3/h
LPG consumption (20425 kcal/ kg) at maximum output	0,58 1,38 Kg/h
Central heating	
Minimum and maximum admitted pressure	0,5 and 3 bar
Thermal agent flow	0,8 m/h
Minimum and maximum admitted pressure	0,5 and 3 bar
Temperature on the heating circuit	40 - 80°C
Connections	
inlet outlet central heating	3/4"
inlet outlet DHW	1/2"
gas supply	3/4"
Dimensions	
Depth (mm)	330
Width (mm)	435
Height (mm)	700
With mounted elbow (mm)	880
Expansion vessel with membrane	8 L
DHW preparator	
DHW temperature range	30 - 60 °C
Flow values	
t = 25°C	17.8 l/min
t = 35°C	12.7 l/min
t = 45°C	9.9 l/min
Domestic cold water pressure	0.2 - 8 bar
Exhaust gases temperature at rated output	147°C
Burned gases connection (input-output)	Ø100/Ø60
Burned gases connection length	Maximum 3 m
Orientative values	
Maximum water content in the installation	200 l
Maximum surface of the precinct	250 sqm

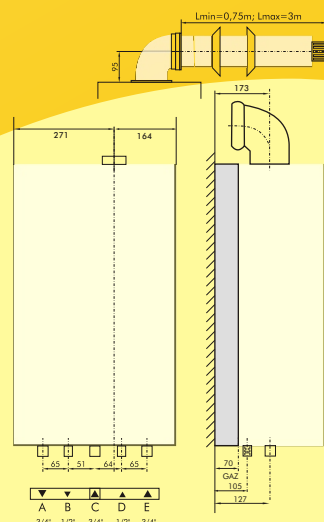
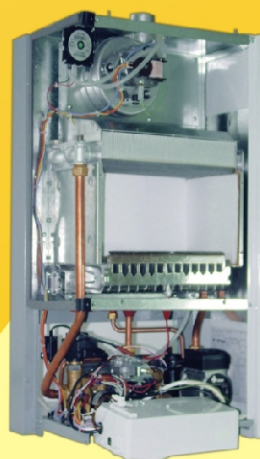
C17 SPV 31 MEF

Safety systems:

- Overpressure safety valve protects the gas boiler at a pressure higher than 3 bars
- Water temperature sensors on the heating and domestic hot water circuits
- Air pressure switch (forced draft version) which detects a possible scavenging deficiency and send this information to the electronical board
- Safety thermostat for the heat exchanger
- Electronical board which receives information and controls the execution elements
- Self-diagnostic performant system
- Antifreeze protection function
- Chalk deposits prevention system
- Antiblocking pump system with acting at every 24 hour

Wall hung gas boiler MOTAN integrate import components of the best quality:

- Grundfos circulation pump (Denmark) / Wilo (France);
- Heat exchanger Fugas / Valmex (Italy);
- Gas valve Honeywell (Holland);
- Air pressostat Honeywell (Olanda);
- Burner Worgas (Italy);
- Expansion vessel Zilmet (Italy);
- Electric fan Fime, EBMPAPST;
- Safety valve Pintossi + C (Italy);
- Electronical board Brahma (Italy);



The Quality Management System implemented within our company assures and is certified according to the ISO 9001:2008 standard

by the Certification German Organizations GERMANISHER LLOYD CERTIFICATIONS, TÜV SÜDDEUTSCHLAND

International certificate for the Management of Quality System



KÖBER Ltd. Dumbrava Roşie, VADURI Branch; Office: Vaduri no 280, Alexandru cel Bun Commune, Neamţ district; postal code 617511, ROMANIA; phone: +40 233 241746; 241746; 241933; 241945; Fax: +40 233 241929; E-mail: office.vaduri@kober.ro; www.motan.ro